



ASX ANNOUNCEMENT

13 May 2010

The Manager
Companies Announcement Platform
Australian Stock Exchange Limited

NEW SURFACE TRENCHING AT AMAYAPAMPA GOLD PROJECT EXTENDS POTENTIAL STRIKE OF MINERALISED ZONE BY 600 METRES

Key Points:

- Recent surface trenching suggests Amayapampa strike length extended by up to 600m to the north of designed open pit.
- Best intersection of 5 metres @ 22.4 g/t Au
- Wide and adjacent zones of anomalous grade in both trenches sampled – up to 82 metres.
- Further trenching planned north and south of these trenches.
- Mineralisation remains open to the north.

The Directors of Republic Gold Limited (“**Republic**” or the “**Company**”) are pleased to announce that the Company has received the results from two exploratory trenches at its Amayapampa Gold Project (“**Amayapampa**” or the “**Project**”) located in Bolivia. The two trenches (Nos 39 and 38) are located 530 metres and 600 metres respectively north of the currently proposed open pit and directly along strike from the mineralised zone within this design pit. One trench produced 5 metres at 22.4 g/t Au, which is consistent with the extensive trenching results already undertaken by the Company within the proposed open pit area.

Republic Gold Technical Director, Mr Neb Zurkic said that “These results have confirmed the Company’s belief that the Amayapampa deposit has significant strike potential to the north. While the general tenor of these results is lower than in the pit area, earlier geological work had predicted a plunge of the mineralised zone to the north of the open pit. This therefore diminishes the surface expression of the mineralised in line with expectation. We are currently laying the foundations for further resource definition drilling to ensure that this extension of the Amayapampa primary deposit will be ready for drilling at the appropriate time.”

Two trenches have been sampled over distances of 420 metres (Trench No 38) and 740 metres (Trench no 39). These extended trenches were designed to capture any possible surface expression of the Amayapampa mineralisation to the north of the designed open pit. Alluvial gold is mined by the locals in the Chusquia Valley that these two trenches straddle.

Further trenching will be done, with two new trenches already designed; one to the south and one to the north. Further to the results in Trench No 38, the mineralisation remains open to the north, where an 82 metre long anomalous zone occurs. The trenching analysis results are supported by preliminary trench mapping.

Details of the trenching results are found in Table 1 and Figure 1 below.

Table 1 Significant Trenching Intercepts

Trench Number	Significant Intersections	Comments
Trench No 38	5m @ 1.02 g/t Au 5m @ 0.61 g/t Au 5m @ 0.55 g/t Au 5m @ 0.78 g/t Au	Bedrock material
Trench No 39	5m @ 1.06 g/t Au 5m @ 1.78 g/t Au 5m @ 22.4 g/t Au	Bedrock material

Yours faithfully



John Kelly
Managing Director
Republic Gold Limited

For more information, please contact John Kelly on 0418 577 759
Or Greg Barns on +61 419 691 846

Republic Gold Limited

ACN 106 399 311

PO Box 2317 Mareeba Qld 4880 Australia

Phone + 61 7 4092 2594 Fax + 61 7 4092 3797 Mobile 0418 577 759

Registered Office: 144 Cobra Road Mareeba QLD 4880 Australia

E-mail: info@republicgold.com.au

www.republicgold.com.au

JORC Compliance Statement

Information in this report that relates to Exploration Results and Mineral Resources for Republic Gold Limited is based on information compiled by John Kelly, Managing Director of Republic Gold and a member of the Australasian Institute of Mining and Metallurgy. John Kelly has significant experience that is relevant to the styles of mineralisation and types of deposit under consideration and to the activity which they are undertaking to qualify as a Competent Person as defined in the 2004 edition of the "Australasian Code for Reporting of Mineral Resources and Ore Reserves". John Kelly consents to the inclusion in this report of these matters, based on the information in the form and context in which it appears.

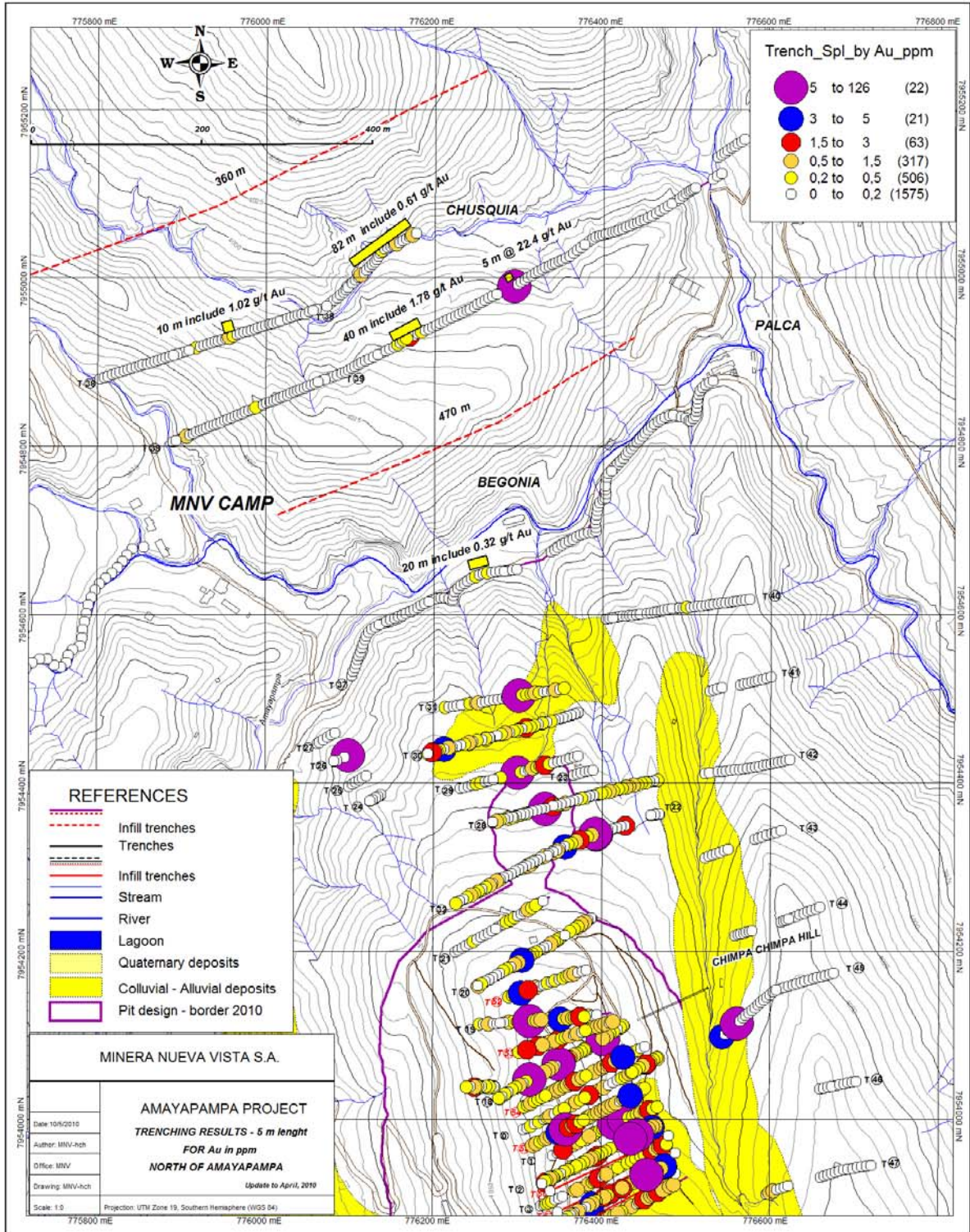


FIGURE 1 – EXPLORATORY SURFACE TRENCHING RESULTS